

EOS

Canon

Delighting You Always



EOS RP  
FULL-FRAME MIRRORLESS

REIMAGINE *“YouR”* POTENTIAL



Made in  
JAPAN



# POWER IN A SMALL PACKAGE

With the revolutionary EOS R system, the latest full-frame mirrorless EOS RP inherits the new RF mount system designed to support the exceptional image quality of RF lenses.

Featuring a large diameter, a short flange focal distance, and a new high-speed communication system, the new mount opens up new possibilities for better-balanced lens design, allowing the camera body to be compact and sleek.

DIGIC 8

26.2 MEGA PIXELS CMOS

FULL FRAME CMOS



## PORTABILITY THAT INSPIRES CREATIVITY

Encased in a solid yet lightweight and compact body, the EOS RP weighs in at only 485g, making it ideal for every photographic experience.



LIGHTWEIGHT



## A MASTERCLASS IN IMAGE QUALITY

The camera features a 26.2-megapixel, 35mm full-frame CMOS sensor and the latest DIGIC 8 image processor to deliver images of exceptional quality.

## LENSES FOR THE NEW ERA

Reimagined for superior optical performance, every RF lens offers higher quality and speed that will satisfy even the most demanding photographer and filmmaker. A customisable lens control ring provides access to your preferred camera setting, offering faster, more intuitive control over every critical shot.



RF28-70MM f/2L USM

Versatile zoom lens that delivers constant large aperture of f/2 across the focal range.



RF24-105MM f/4L IS USM

Compact multi-functional zoom lens with smooth high-speed AF powered by Nano USM.



RF50MM f/1.2L USM

An ultra-large-diameter, single-focus standard lens featuring 10-blade aperture for the perfect bokeh background.



RF35MM f/1.8 MACRO IS STM

Lightweight, compact prime lens designed for macro photography with a minimum focusing distance of 0.17m.

## FULL COMPATIBILITY WITH YOUR LENSES

The EOS RP is also compatible with more than 70 existing EF and EF-S lenses by attaching it to one of the three mount adapters:



CIRCULAR POLARIZING (CPL) FILTER

VARIABLE NEUTRAL DENSITY (VND) FILTER



MOUNT ADAPTER EF-EOS R



CONTROL RING MOUNT ADAPTER EF-EOS R



DROP-IN FILTER MOUNT ADAPTER EF-EOS R



## CAPTURE THE MOMENT YOU DESIRE

Possibly one of the most responsive and intuitive full-frame mirrorless cameras you will ever handle.

4,779

AF Positions

0.05s

Fast AF Speed

Dual Pixel CMOS AF

## FOCUS ON EVERY POSSIBILITY

With a wider focusing area of 88% x 100%<sup>1</sup>, engage up to 4,779 selectable AF positions<sup>2</sup> for greater precision and flexibility in any photo composition.



## NEVER MISS A FOCUS

Another new innovative feature is the Focus Bracketing<sup>3</sup> that is useful for photography in situations with shallow depth of field, especially in macro where it is not possible to have multiple subjects in focus.

Select your nearest focal point, focusing range interval and the desired number of

shots (2 to 999), then the camera will take a series of photos based on your settings.

Using Canon's Digital Photo Professional software, you can easily stitch the photos together into one single high-resolution photo with corner-to-corner clarity.



Focus Bracketing

<sup>1</sup> When shooting still photos. Actual coverage varies depending on the lens in use. Supported lenses: RF lenses, EF lenses (most existing products, with a few exceptions) with Extender EF III (depending on focal distance of the master lens).

<sup>2</sup> In AF Crop mode or movie shooting mode, the number of selectable AF positions may be reduced, depending on other camera settings and the lens in use.

<sup>3</sup> Works with selected lenses only. For image clarity, the use of a tripod with remote switch or wireless remote control is recommended. Shutter speed, aperture, and ISO sensitivity settings must be fixed to match the condition of first exposure in the series. The [Auto] Picture Style cannot be selected.

<sup>4</sup> Based on the results of AF speed tests in accordance with CIPA guidelines. Results may vary depending on shooting conditions and lens in use. Relies on internal measurement method. Test conditions: Brightness at time of distance measurement: EV12 (regular temperature, ISO 100) | Shooting mode: M | Lens in use: RF24-105mm f/4L IS USM, with a focal distance of 24mm | Live-view mode: On (with manual shutter button operation) | AF mode: Live single-point AF (central) | AF operation: One-Shot AF

<sup>5</sup> Available on One-Shot AF, servo AF and face-tracking AF

<sup>6</sup> When using RF50mm F1.2 L USM (under these conditions: f/1.2, center AF point, at 23°C/73°F, ISO 100, One-Shot AF)



## SEIZE EVERY CRITICAL MOMENT

The EOS RP achieves focus in as fast as 0.05 seconds<sup>4</sup>. Capture decisive moments of fast-moving or unpredictable subjects, be it wildlife or dancers performing on stage.

## ATTAIN FOCUS ON WHERE IT MATTERS

In addition, the Eye Detection AF<sup>5</sup>, which supports Servo AF mode, makes focus tracking on a moving portrait subject even more accurate by ensuring that the eye is always sharp.



Eye Detection AF



## SUPERB LOW-LIGHT LOW-NOISE PERFORMANCE

ISO

40000

One of the key strengths of the EOS RP is the superb ISO sensitivity designed to handle any challenging lighting conditions without compromising image integrity.

The native ISO range of 100 - 40,000 (for stills), expandable to 50 (L), 51,200 (H1) & 102,400 (H2), allows for quicker shutter speed to avoid camera or subject blurring.



## SET YOUR SIGHT IN DARKNESS

The EOS RP's autofocus can also operate in near total darkness at EV-5<sup>6</sup>, making it effortless to ascertain focus on hard-to-see subjects.

-5  
EV AF





# ACHIEVE CINEMATIC MOVIES WITH 4K

Revel in stunningly realistic movies with EOS RP's capability of recording in 4K 24p/25p.

## ISO 100-12,800

Exposure sensitivity from ISO 100 to 12,800 ensures high quality footages even in low-light situations.

## MANUAL FOCUS (MF) ASSIST

When focusing manually, the Manual Focus (MF) assist function highlights the areas that are in focus so you are able to quickly select the right focus for every crucial shot. The aperture can now be adjusted in 1/8-stop increments, making it easier to select the ideal exposure to match lighting conditions.

## MOVIE IS

Powerful image stabilisation (IS) combining optical and electronic IS, ensures stable and smooth movie recording.

## HDMI OUTPUT

The EOS RP has an HDMI port that outputs 8-bit, YCbCr 4:2:2, 4K movies that can be recorded or displayed on external devices to improve production workflow.

## 4K TIME-LAPSE

4K time-lapse shooting is also available in three selectable modes to match the speed and type of subjects.



EOS Movie  
4K+ FULL HD



ISO  
Full 25600  
4K 12800



In-Camera  
Digital Lens  
Optimizer



HDMI



4K  
Time-Lapse  
Movie



## DESIGNED FOR YOUR FREEDOM OF EXPRESSION

Be in full control of your artistic expression with the 3.0-inch Vari-angle Touchscreen LCD.

Equipped with approximately 1.04 million dots and an intuitive touch panel, taking photos from high or low angles has never been easier.



3:2  
Wide  
ClearView II  
Touch



Vari angle  
LCD

## FOR A FIRMER GRIP

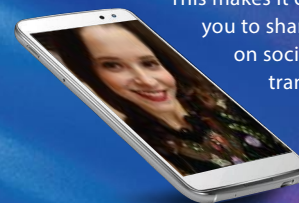
Exclusively designed for EOS RP, the Extension Grip EG-1 can be attached to extend the height of the camera grip for optimal handling, especially when using a telephoto lens. The Extension Grip EG-1 uses a dial-type connector for easy attachment and allows SD card and battery change while attached to the camera.



## CONNECTIVITY FOR EASE OF MIND

With Wi-Fi connection established and the EOS RP paired to a smart device/PC via the Camera Connect App or Image Transfer Utility 2, you can have your photos automatically transferred to your smart device/PC as they are taken.

This makes it convenient for you to share your photos on social media, or transfer your photos in real-time to



your computer for easy viewing during a photo shoot. With Image Transfer Utility 2, you can also automatically backup your images to a paired PC with Wi-Fi connection. Bluetooth low-energy technology also enables the camera to maintain a constant connection to your smart devices with minimal battery usage.



Wi-Fi  
CERTIFIED



Bluetooth



# SPECIFICATIONS

IMAGE SENSOR	
Type	Approx. 26.2 megapixels, full-frame (36.0 x 24.0mm) CMOS sensor
RECORDING SYSTEM	
Pixels recorded	L (Large): Approx. 26.0 megapixels (6240x4160) M (Medium): Approx. 11.5 megapixels (4160x2768) S1 (Small 1): Approx. 6.5 megapixels (3120x2080) S2 (Small 2): Approx. 3.8 megapixels (2400x1600) RAW: Approx. 26.0 megapixels (6240x4160) C-RAW: Approx. 26.0 megapixels (6240x4160)
IMAGE PROCESSING DURING SHOOTING	
Picture style	Auto, Standard, Portrait, Landscape, Fine Detail, Neutral, Faithful, Monochrome, User Defined 1-3
White balance	Auto (Ambience priority), Auto (White priority), Preset (Daylight, Shade, Cloudy, Tungsten light, White fluorescent light, Flash), Custom, Color temperature setting (approx. 2500-10000 K)
Image correction	Auto Lighting Optimizer, Highlight tone priority, Lens aberration correction
AUTOFOCUS	
Focus method	Dual pixel CMOS AF, Contrast AF (for 4K movie recording)
AF method	Face+Tracking, Spot AF, 1-point AF, Expand AF area (vertically/horizontally), Expand AF area (around), Zone AF
Available AF point positions	Max. 4,779
Available AF areas when automatically selected	Max. 143
Touch & drag AF	Available
AF operation	One-Shot AF, Servo AF
Focusing brightness range	(Stills) EV -5 to 18, (Video) EV -2.5 to 18
Focus bracketing	Available
EXPOSURE CONTROL	
Metering mode	Real-time metering using the image sensor 384-zone (24x16) metering
Shutter speed	1/4000 sec. to 30 sec., Bulb, X-sync at 1/180 sec.
Shooting mode	(Stills) Basic Zone: Scene Intelligent Auto, Special scene (Portrait, Group Photo, Landscape, Sports, Kids, Panning, Close-up, Food, Night Portrait, Handheld Night Scene, HDR Backlight Control, Silent Mode) Creative Zone: Flexible-priority AE, Program AE, Shutter-priority AE, Aperture-priority AE, Manual exposure, Bulb, Custom shooting modes (C1/C2/C3) (Video) Movie auto exposure, Movie manual exp., HDR movie
ISO speed (recommended exposure index)	Basic Zone: ISO speed set automatically Creative Zone: ISO Auto, manually set within ISO 100-40000 (in 1/3- or 1-stop increments), L (ISO 50), H1 (ISO 51200), or H2 (ISO 102400)
Exposure compensation	Still photo shooting: Manual: ±3 stops in 1/3- or 1/2-stop increments AEB: ±3 stops in 1/3- or 1/2-stop increments Movie recording: ±3 stops in 1/3- or 1/2-stop increments
HDR shooting	Available
Multiple exposures	Available

DRIVE SYSTEM	
Continuous shooting speed	High-speed continuous shooting: Max. approx. 5.0 shots/sec. Low-speed continuous shooting: Max. approx. 2.6 shots/sec.
MOVIE RECORDING	
Movie recording size	4K (3840x2160)*, Full HD (1920x1080), HD (1280x720) *output in 4K UHD resolution through image processing
Frame rate	Full HD/HD: 59.94p / 29.97p (with NTSC) Full HD/HD: 50.00p / 25.00p (with PAL) 4K: 23.98p (NTSC) / 25.00p (PAL)
Movie recording modes	Movie crop, movie digital IS, HDR movies, Video snapshot, Time-lapse movies
SCREEN	
Type	Vari-angle, touch screen, TFT color, liquid-crystal monitor
Screen size and dots	Approx. 7.5 cm (3.0 in.) (3:2) with approx. 1.04 million dots
VIEWFINDER	
Type	OLED color electronic viewfinder
Screen size and dots	0.39-inch (4:3) with approx. 2.36 million dots
INTERFACE	
Digital terminal	Hi-Speed USB equivalent; USB Type-C
HDMI mini OUT terminal	Type C (auto switching of resolution)
External microphone IN terminal	3.5 mm diameter stereo mini-jack
Remote control terminal	Compatible with Remote Switch RS-60E3
Wireless remote control	Compatible with Wireless Remote Control BR-E1 (via Bluetooth)
Headphone	Headphone terminal provided, volume adjustable
WIRELESS FEATURES	
Wi-Fi	IEEE 802.11b/g/n
Bluetooth	Bluetooth Specification Version 4.1 compliant (Bluetooth low energy technology)
POWER	
Battery	Battery Pack LP-E17, quantity 1 * USB Power Adapter PD-E1 enables in-camera charging of LP-E17.
DIMENSIONS AND WEIGHT	
Dimensions (WxHxD) (CIPA compliant)	Approx. 132.5x85.0x70.0 mm / 5.22x3.35x2.76 in.
Weight	Approx. 485 g / 17.11 oz. (including battery pack and card)/Approx. 440 g / 15.52 oz. (body only)

Dimensions and weight listed above are based on CIPA Guidelines (except weight for camera body only). Product specifications and the exterior are subject to change without notice. If a problem occurs with a non-Canon lens attached to the camera, consult the respective lens manufacturer.

## DISCLAIMERS

This document is for information only and the contents are subject to change without notice. Errors and omissions excepted. Images are simulated. Weight and dimensions are approximate. Nothing in this document should be construed as a warranty. Product/Service options, name and availability may vary by region. We expressly disclaim any liability or contractual obligations with respect to this document. Canon and PowerShot among others are trademarks of Canon Inc. and/or its affiliates. Other names, marks and logos contained in this document may be the registered trademarks or trademarks of their respective owners.

